

Reverie Ventures India Pvt. Ltd

Introduces

Suvidha

Prefabricated structures

(Working for your Comfort)



Company's Profile

Reverie Ventures India Pvt. Ltd. is engaged and connoisseur in various fields ever since its inception.

- ❑ Suvidha Prefabricated Structures
- ❑ Mining & Trading (Kailash Black Stone)
- ❑ Real Estate
- ❑ Engineering & Contracting
- ❑ Pavitra Gangajal(Kailash Sarovar)

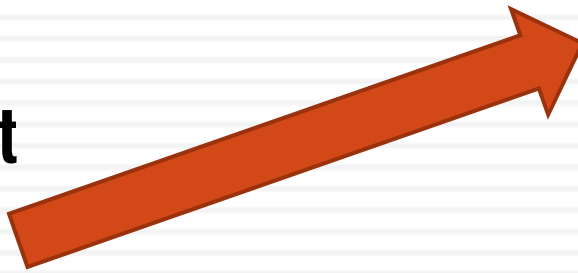
“Steadily focused on creating a better experience in every aspect of life.”

- | | |
|---------------|-----------------------------------|
| ❑ Strategy: | Strength to strength |
| ❑ Service: | Synonymous with quality |
| ❑ Commitment: | Towards customers & Reliability |
| ❑ Belief: | Building relations with one & all |



Our Culture

- R - Respect
- V - Values
- I - Integrity




About Suvidha Prefabricated Structures

Strength:

- Team of well qualified, skilled and experienced personnel
- Able to supply a wide range of prefab Structures, keeping in mind the needs of the clients.
- Customization facility on the products based on:
 - Design
 - Shape
 - Size



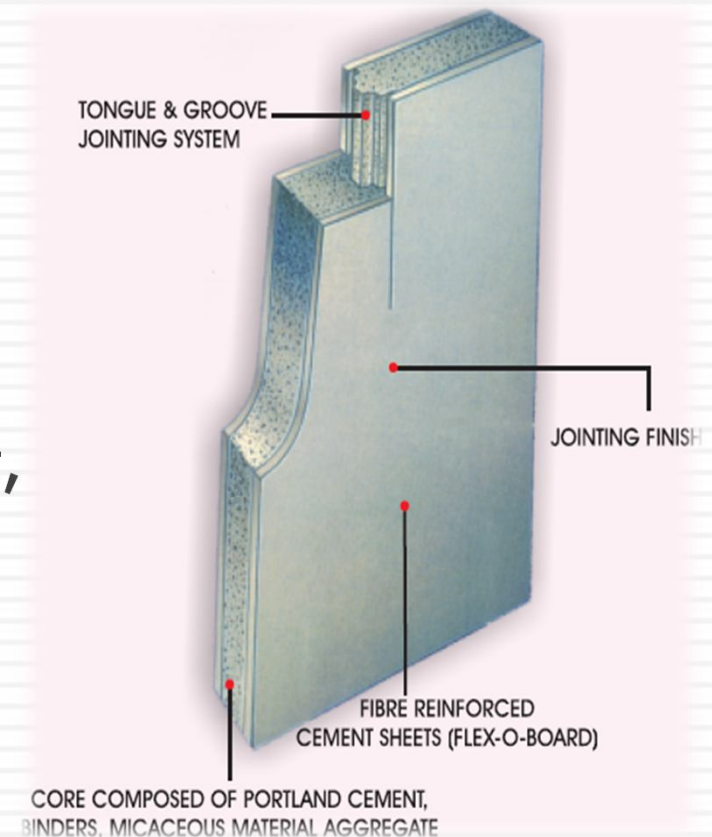
Our range includes:

- 
- ▣ Houses
 - ▣ Offices
 - ▣ Hospitals
 - ▣ Barracks (Bullet proof option available)
 - ▣ Sit Outs
 - ▣ Out Houses
 - ▣ Site Offices
 - ▣ Conference Room and auditoriums
 - ▣ Warehouses
 - ▣ Labour Quarters, etc.

Suvidha Made by Pre Fabricated Panels

What it's made of?

- Sandwiched panel of two fibre-reinforced cement sheets enclosing a lightweight concrete core composed of Portland cement, binders and a mix of siliceous and micaceous material aggregate.



More on Prefabricated Panels..

- Height : 2*8 / 2*9 / 2*10
- Width : 50mm / 75mm
- Extremely Strong (Can bear a load up to 5 Tons PSM)
- Extremely Quick Construction (80%less time taking than general construction)
- Dry Construction (Natural resource efficient)
- Can be Re- Located
- Earthquake resistant
- Heat Retarding
- Fire Proof
- Noise Proof
- Water Resistant
- Extremely Light



...Continued (IGBC certified)

- ❑ The product's environmental-friendliness, light weight, sturdiness and innovative manufacturing process are a result of extensive R& D efforts.

- ❑ Totally cement based product- **long lasting & strong**
- ❑ **Impact Resistance equivalent to brick wall**
- ❑ Completely resistant to water
- ❑ No termite attack
- ❑ Safe : the best fire rating among all materials
- ❑ Saves time: 1/3 rd the time of wood products

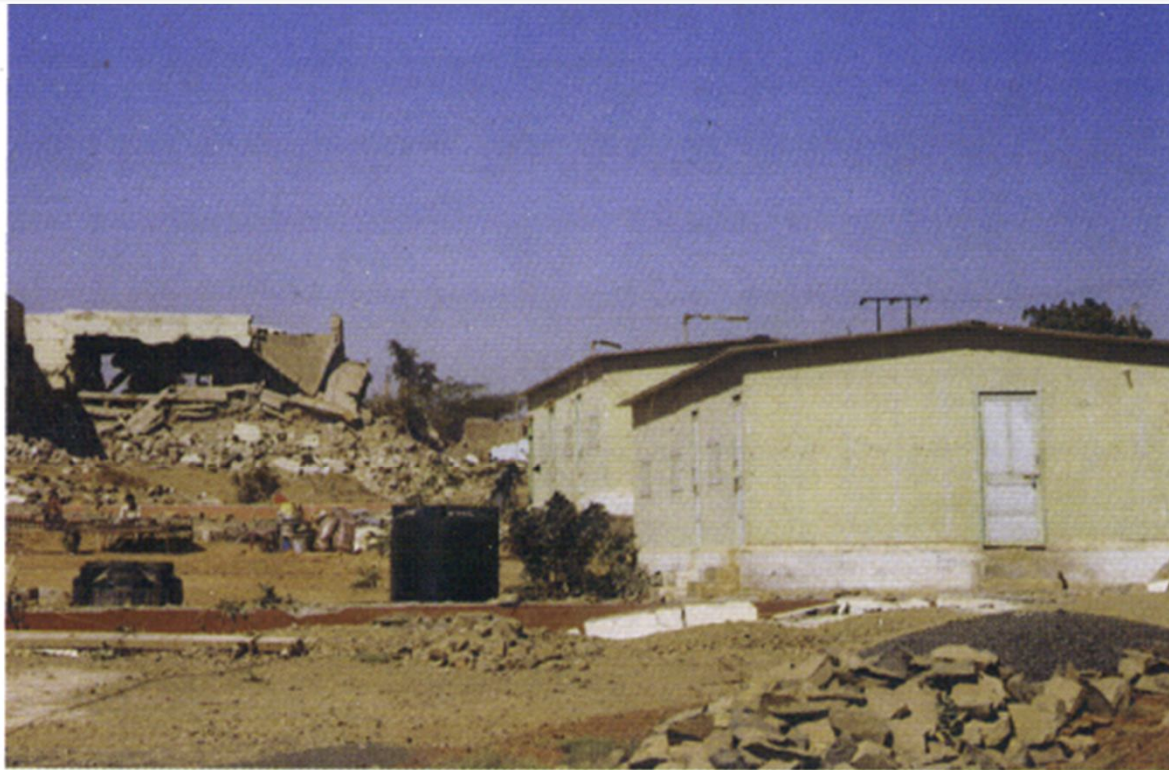


And a Certified green product

- ❖ No damage to environment, preserves nature
- ❖ Non toxic
- ❖ Energy efficient , good sound insulation
- ❖ Can be recycled, relocated



...continued (Earthquake Resistant)



Post earthquake Customs cabin at Bhachau, Kutch Dist., Gujarat.

How is it installed?

Grouting the Floor Channels



Cutting of panels



Cotnd:1

Erection Of Panel



Applying Silicon based putty



Contd:2

Filling Acrylic Putty & Applying Fiber Mesh Tape



Cutting for Conduiting (Concealed Wiring)



Contd:3

Service Lines & Conduiting (Concealed)



Tiles Placed after the Service Lines



Detailed Installation of Suvidha Structure.....

Foundation (step 01)



Steel Frames (Step 02)

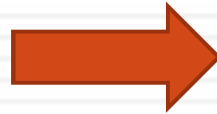


Panel Erection (Step 03)



.....

Panels Over Roof
(Step04)



Finishing (Step 05)



Finished Structure



Finished Structures

Laboratory:



Site office



This image cannot currently be displayed.



Specialized Structures

Ground + 1 Petrol Pump →



Ground + 1 Staff Quarters ↓



Contd:1

Ground+1 Commercial Space

Office Partitions and Cubicals



Contd:2

Hospitals Partitions



Conference room

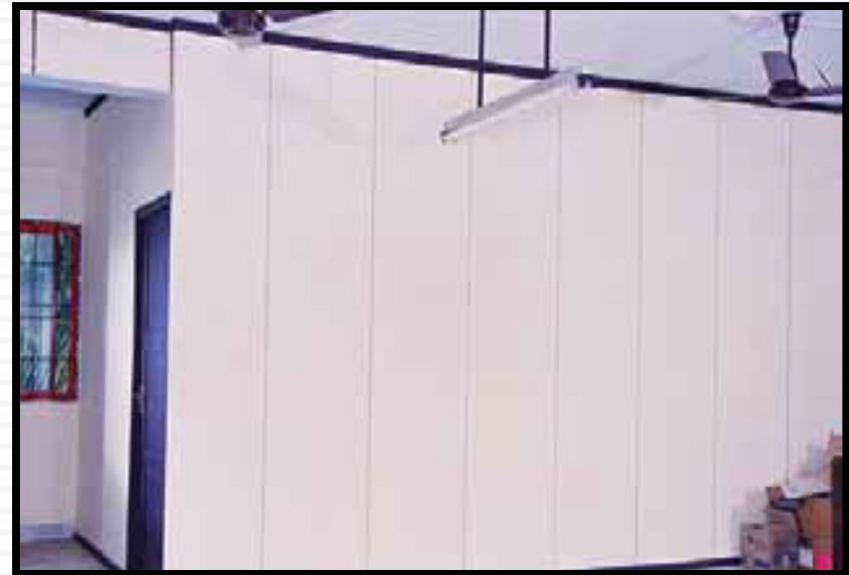
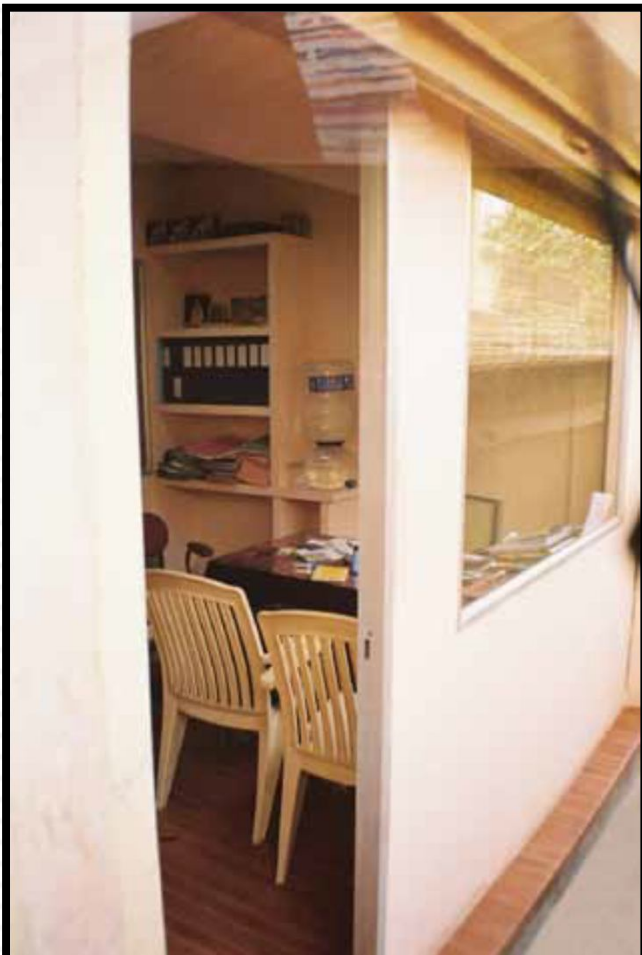


Office



Contd:3

Industrial Partitions



Office Partitions



Contd. 4:



**ACCOMADATION FOR ENGINEERS AT
RELIANCE PETROLEUM - JAMNAGAR**



Tsunami Rehabilitation Houses at Andaman & Nicobar



Mass Housing Project at Andaman & Nicobar



Phoenix city IT Park



Aesthetic Partition Cabins & Interiors



Projects

- ❑ **Bhilai Steel Plant (Rowghat) BSF Barracks**
- ❑ **BMSICL (Bihar)**
- ❑ **Simplex (Industrial Shed , C.G.)**
- ❑ **IVRCL (Raipur – Bilaspur Site Offices on Highway, C.G.)**
- ❑ **Luxury Units in Farm Houses (Chhattisgarh)**
- ❑ **JK Lakshmi Cement (Ahiwara, C. G.)**
- ❑ **GDCL (Ahiwara, C. G.)**



Certification of Prefab Panels



- ❑ QT and QA done and Certified by JNTU, Hyderabad.
- ❑ Noise test Certification by Acoustics Lab of Prasar Bharti by using Norsonic Analyzer.
- ❑ Fire test Certification by Central Building Research Institute (A Constituent Establishment of CSIR)
- ❑ IGBC Certification for Green Building.



Prestigious Clientele

Construction



Industrial



HINDUJA



IndianOil



Hitachi Construction Machinery

Shopping Malls



Fantasia Mall, Mumbai

Hospitals



And Many More....



Thankyou

**RVI Group
Bhilai ,DURG (Chhattisgarh)
INDIA**

Website: WWW.RVINDIA.IN

E-Mail ID: RVI@RVINDIA.IN

Phone No :09200084444, 09303133001

